

BALDOR • RELIANCE

Customer information packet

L3708T-50

5/3.7KW, 1450RPM, 1PH, 50HZ, 213T, 3740LC, TEF

Class - None

Division - Not Applicable

Specifications

Enclosure	TEFC
Frame	213T
Frame Material	Steel
Frequency	50.00 Hz
Motor Letter Type	Cap Start, Cap Run
Output @ Frequency	3.700 KW @ 50 HZ
Phase	1
Synchronous Speed @ Frequency	1500 RPM @ 50 HZ
Voltage @ Frequency	220.0 V @ 50 HZ
XP Class and Group	None
XP Division	Not Applicable
Agency Approvals	C UR US WEEE UKCA CURUS CE
Ambient Temperature	40 °C
Auxillary Box	No Auxillary Box
Auxillary Box Lead Termination	None
Base Indicator	Rigid
Bearing Grease Type	Polyrex EM (-20F +300F)
Blower	None
Current @ Voltage	20.400 A @ 220.0 V
Design Code	-
Drip Cover	No Drip Cover
Duty Rating	CONT
Efficiency @ 100% Load	86.3 %
Electrically Isolated Bearing	Not Electrically Isolated
Feedback Device	NO FEEDBACK
Front Shaft Indicator	None
Heater Indicator	No Heater
High Voltage Full Load Amps	20.4 a

Part detail

Revision	D
Type	AC
Mech. spec.	37C001
Base	
Status	PRD/A
Elec. spec.	37WGQ077
Layout	37LYC001
Eff. date	05-10-2024
CD Diagram	CD0017A02
Poles	04
Leads	2#12 A PH,2#14 B PH
Proprietary	False
Created date	03-09-2023

Insulation Class	F
Inverter Code	Not Inverter
KVA Code	G
Lifting Lugs	Standard Lifting Lugs
Locked Bearing Indicator	No Locked Bearing
Motor Lead Quantity/Wire Size	2 @ 12 AWG, A PH
Motor Lead Termination	Flying Leads
Motor Standards	NEMA
Motor Type	3740LC
Mounting Arrangement	F1
Number of Poles	4
Overall Length	19.02 IN
Power Factor	96
Product Family	General Purpose
Pulley End Bearing Type	Ball
Pulley Face Code	Standard
Pulley Shaft Indicator	Standard
Rodent Screen	None
RoHS Status	ROHS COMPLIANT
Service Factor	1.00
Shaft Diameter	1.375 IN
Shaft Ground Indicator	No Shaft Grounding
Shaft Rotation	Reversible
Shaft Slinger Indicator	No Slinger
Speed	1450 rpm
Speed Code	Single Speed
Starting Method	Direct on line
Thermal Device - Bearing	None
Thermal Device - Winding	None
Vibration Sensor Indicator	No Vibration Sensor
Winding Thermal 1	None
Winding Thermal 2	None

Nameplate

NP1372L										
CAT.NO.	L3708T-50									
SPEC.	37C001Q077G1									
HP	5/3.7KW									
VOLTS	220									
AMP	20.4									
R.P.M. (1/MIN)	1450									
FRAME	213T		HZ	50		PH	1			
SER.F.	1.00	CODE	G	DES	-	CL	F			
NEMA-NOM-EFF	86.3	PF	96							
RATING	40C AMB-S1 CONT									
CC			IP44 IC411 61KG							
DE	6307		ODE	6206						
ENCL	TEFC	SN								
	IE2-50HZ 86 (75%),83 (50%)									

Accessories

Part number	Description	Multiplier
37-3301	C FACE KIT	P1

AC Induction Motor Performance Data

Record # 101593

Typical performance - not guaranteed values

Winding: 37WGQ077-R003		Type: 3740LC		Enclosure: TEFC	
Nameplate Data			220 V, 50 Hz: Single Voltage Motor		
Rated Output (KW)	3.7	Full Load Torque	17.78 LB-FT		
Volts	220	Start Configuration	direct on line		
Full Load Amps	20.4	Breakdown Torque	56 LB-FT		
R.P.M.	1450	Pull-up Torque	24.2 LB-FT		
Hz	50 Phase	1	Locked-rotor Torque	35.6 LB-FT	
NEMA Design Code	- KVA Code	G	Starting Current	135 A	
Service Factor (S.F.)		1	No-load Current	4.34 A	
NEMA Nom. Eff.	86.3 Power Factor	96	Line-line Res. @ 25°C	0.39593 Ω A Ph 1.2526 Ω B Ph	
Rating - Duty		40C AMB-CONT	Temp. Rise @ Rated Load	60°C	

Load Characteristics 220 V, 50 Hz, 3.7 KW

% of Rated Load	25	50	75	100	125	150
Power Factor	86	93	95	96	96	95
Efficiency	71.6	83.1	86.4	86.8	85.6	83.2
Speed	1491.8	1483.6	1474.9	1464.8	1452.8	1437.9
Line amperes	6.88	10.9	15.3	20.3	25.7	32

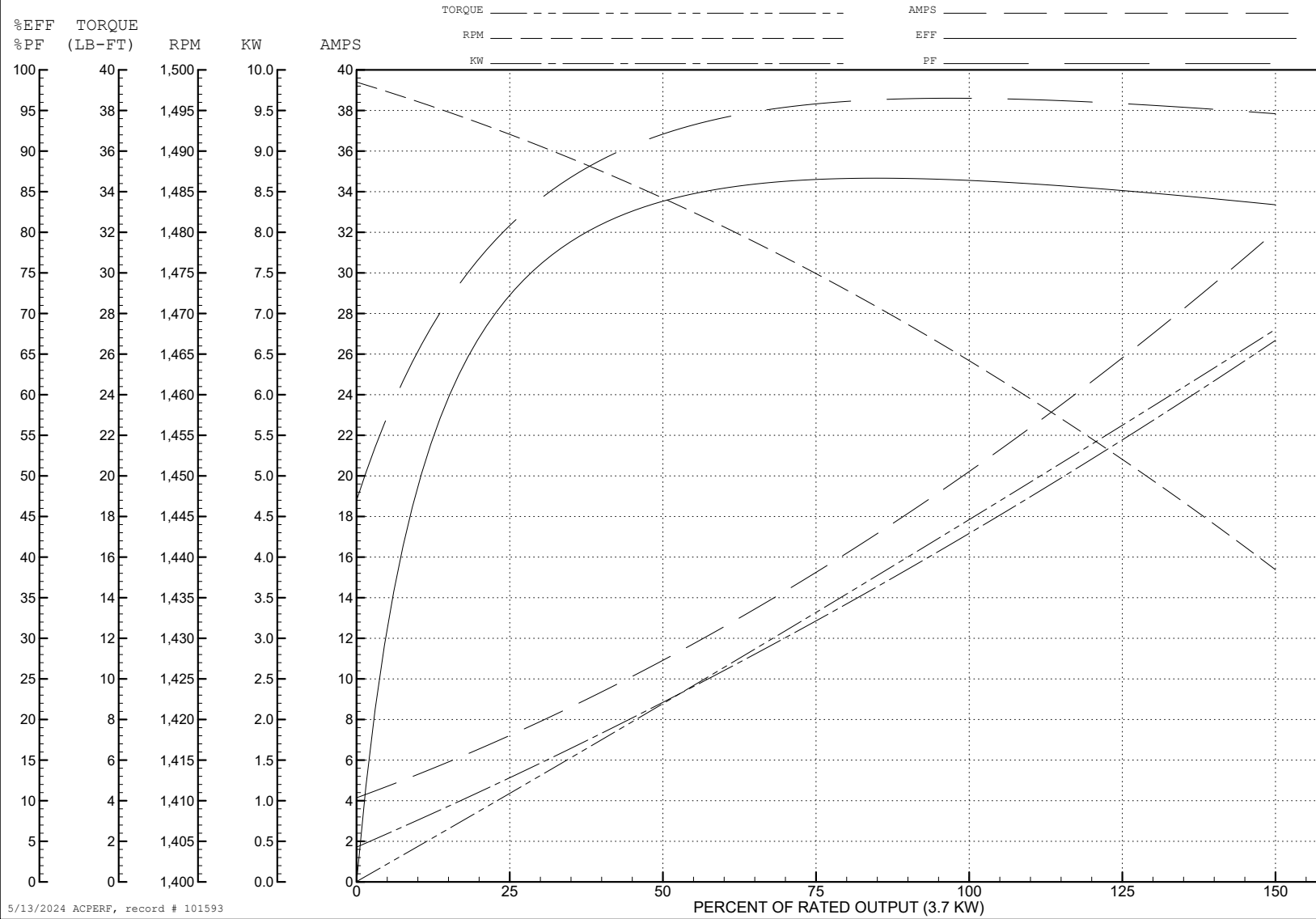
ABB Motors and Mechanical Inc.

WINDING # 37WGQ077

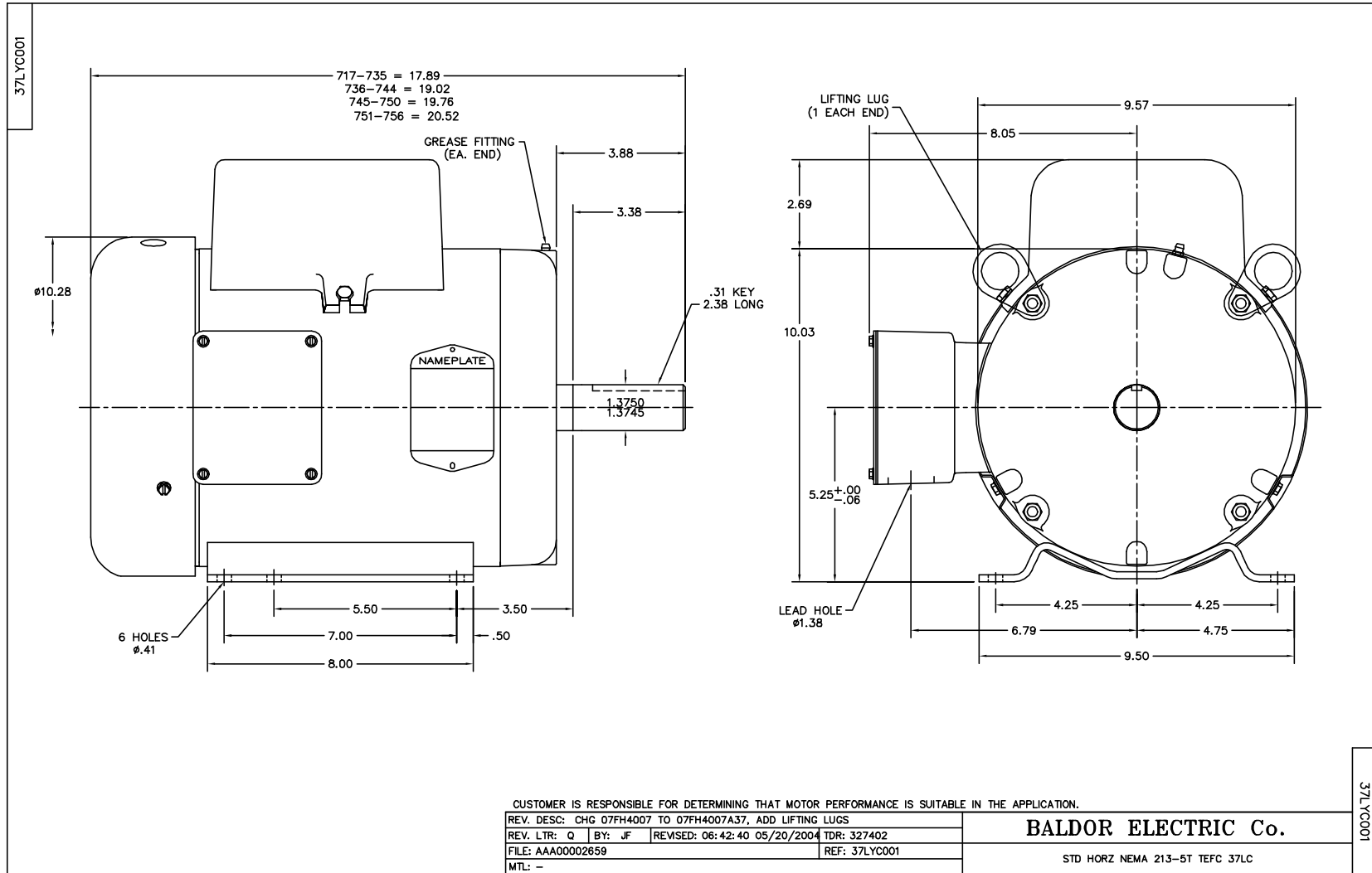
3.7 KW 1 PH 50 HZ 1450 RPM 220 V 3740LC

Typical performance - not guaranteed values.

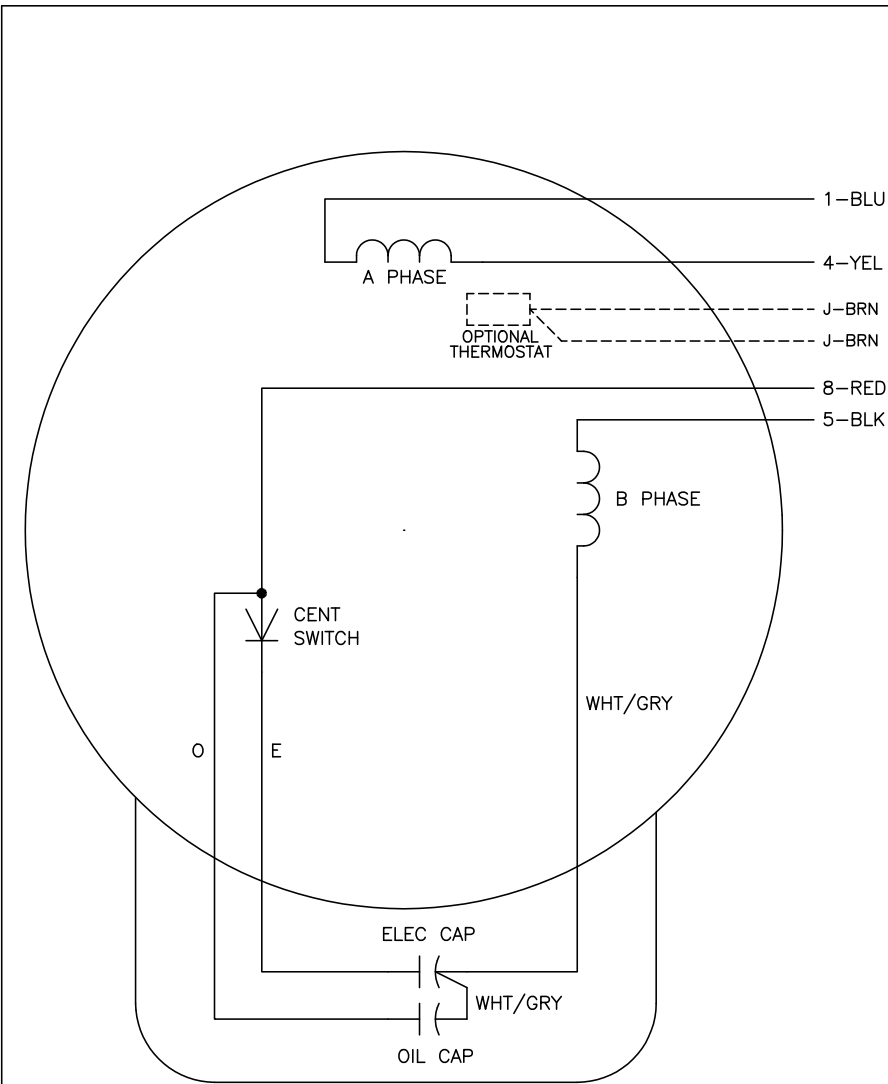
TORQUES (LB-FT): PO=56 PU=24.2 LR=35.6 LRA=135



5/13/2024 ACPERF, record # 101593



CD0017A02



	LINE A	LINE B
STD	1,8	4,5
OPP	1,5	4,8

NOTES:

1. STANDARD ROTATION IS CCW FACING END OPPOSITE SHAFT EXTENSION.
2. OPTIONAL THERMOSTAT IS PROVIDED WHEN SPECIFIED.
3. MULTIPLE CAPACITORS ARE CONNECTED IN PARALLEL UNLESS OTHERWISE SPECIFIED.
4. LEAD COLORS ARE OPTIONAL. LEADS MUST ALWAYS BE NUMBERED AS SHOWN.

REV. DESC: REVISE TO SHOW OPTIONAL COLORS			
REV. LTR: B	BY: JLP	REVISED: 04/09/99 11:30	TDR: 0178636
CD0017A02		FILE: AAA00007514	MDL: -
		MTL: -	

BALDOR ELECTRIC Co.

TYPE LC, SV, REV, 4 LEADS

CD0017A02